

Purpose

Preschoolers too wild for you? Let them learn to be REALLY WILD!



Martha Lafite Thompson Nature Sanctuary offers monthly programs to introduce preschool students to the natural world.

This series of fun programs is filled with valuable environmental experiences where children learn about the natural world firsthand.



What Ages Can Take Part?

These programs are designed for children ages 3 to 6. All children must be accompanied by an adult. In order to maximize your child's learning experience we recommend no more than two adults per child.

2010 Preschool Program Prices

Member: \$5/child and accompanying adult

General Public: \$8/child and accompanying adult

How to Register



- **Call** (816) 781-8598

Note: Our programs fill quickly, so please register your child in advance. Payment is required at time of registration. Families may register individually or as part of a larger group. Limit 15 children per program.

Group Program Option

Birthday, play group or just a bunch of friends!

If you have a group of preschoolers, you are more than welcome to schedule a separate program by calling : (816) 781-8598.

Group rates: Members-\$65, Nonmembers-\$75

Martha Lafite Thompson Nature Sanctuary Membership Levels

As a member, you will receive benefits such as:

- *The Sanctuary*, our bi-monthly newsletter
- discounts on all public programs
- 10% off gift shop items
- member-only gift shop sales
- special member-only events

Individual Privileges

Ladybug\$20 - 34

Coneflower\$35 - 49

Family Privileges

Bluebird\$50 - 74

Bluestem\$75 - 124

Monarch **\$125 - 249

Kingfisher\$250 - 499

Sycamore\$500 - 749

Bobcat\$750 - 999

Martha's Circle\$1000+

**** To optimize your donation and assistance to the Sanctuary, please consider a Monarch membership level, \$125 or higher.**

Take a look at our other programs!



Scout Programs

Birthday Parties

Special Events

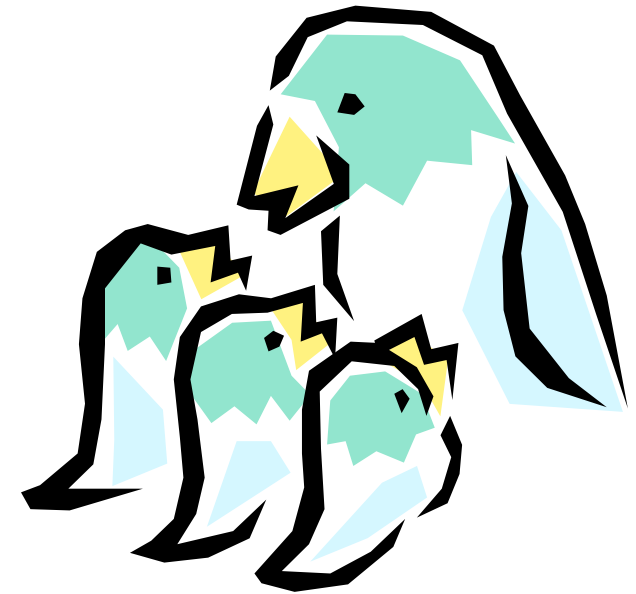
Adult Lecture Series

School Programs

E.G.A.D.S. Summer Camp



Program Guide For Preschoolers 2010



Martha Lafite Thompson Nature Sanctuary

407 N. Lafrenz Road, Liberty, MO 64068

Phone: (816) 781-8598 Fax: (816) 781-7210

www.naturesanctuary.com

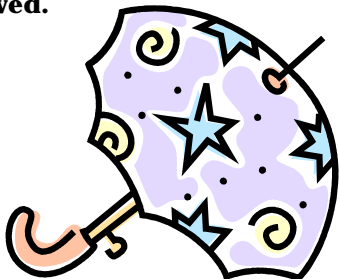
Program Information

- These programs are designed for preschool children who can participate in the learning activities.
- A parent/guardian must be with his or her child(ren) at all times.
- Only pre-registered children will be allowed in the program.
- To maximize your child's experience during our program, we prefer younger/older children not attend.
- Programs begin promptly at the stated time, and last for approximately one hour.
- If Liberty schools are canceled due to inclement weather, MLTNS will be closed that day.
- In addition to our Preschool Programs, we have a number of public programs throughout the year which are suitable for families.

What to Bring &

How to Dress Children

- Rain or shine, outdoor exploration is a part of each program.
- Students should dress for the conditions. Everyone should wear shoes that completely enclose the foot, long pants, and a coat and hat, as the weather warrants.
- Sandals, crocs, and water shoes are **not allowed**.



2010 Program Schedule

Program Times: 10:00 - 11:00 a.m.

(unless otherwise noted)

January 15

Snowflake Fun

With snow everywhere, it's the perfect time to learn about snowflakes! Join us as we hear a snowy story and try our hand at making some simple paper snowflakes!

February 12

Animal Valentines

From berries to bugs to sticks and more, animals give each other "gifts" to show they care. Learn about some of the "valentines" animals give each other, then make an edible valentine for our feathered friends.

March 19

Fabulous Frogs

This time of year the Sanctuary is starting to "hop" with frogs and toads. We'll learn about our webbed-footed friends, take a hike to listen to their calls, then make a froggy craft!

April 16

Busy, Buzzing, Bees

Bees work very hard and do lots of good things for us! Come and learn all about the Queen, her worker bees, the drones, and which very special job each one does.

May 21

Lost Ladybugs

Come learn about ladybugs then try your hand at catching them. Each ladybug we find will be photographed and its data sent to the Lost Ladybug Project— a group interested in rare ladybug populations!

June 18

Slithering Snakes

There are many fascinating snakes that call the Sanctuary home. We'll take a snake hike, meet one of our educational program snakes, and make a snake mobile to hang up at home!

July 16

Hop, Hop, Splash! *

10:00 - 11:30 a.m. this program

Getting wet and having fun is what we'll be doing during this program as we take a look at water-loving animals like turtles, frogs, and aquatic insects!

August 20

Rockin' Rocks *

10:00 - 11:30 a.m. this program

We'll go to the creek again to look for fossils and learn about the kinds of rocks we find there. Then, we'll make a "fossil" for you to take home.

September 17

Butterfly Bonanza

Monarch butterflies migrate hundreds of miles every fall from North America to Mexico, then back again in the spring. Learn about the butterfly lifecycle and try your hand at catching one. We will be tagging any Monarchs we catch.

October 15

Creepy, Crawly, & Cool!

Celebrate Halloween early by learning about the creepy, crawly things in nature that are also super cool! We'll meet some of them in person and make a creepy, crawly, craft!

November 12

Let's Talk Turkey

Join us as we learn about wild turkeys, try our luck with a turkey call, and make a Thanksgiving craft!

December 17

Christmas Critters

What is a partridge an why is it in a pear tree? Do all reindeer have antlers? Join us as we learn about some of the animals found in the songs and stories of Christmas time.

***Only tennis shoes or boots are acceptable footwear for this program.**